

zoo scape



Photo by Jamie Pham

CRETACEOUS CREATURES

About 65 million years ago, at the tail end of the Cretaceous period, in a colossal example of what it means to be in the wrong place at the wrong time, a 7.5-mile-wide asteroid (probably the largest of a series) collided with what is now the Yucatán Peninsula. The impact created the Chicxulub crater and triggered titanic earthquakes, tsunamis, volcanic eruptions, and massive wildfires that resulted in dramatic climate changes. This catastrophic chain of events ultimately wiped out the large dinosaurs that dominated the planet.

Some theropod dinosaurs, such as Utahraptor, were feathered.

For a short time, a collection of Cretaceous creatures has taken up residence at the L.A. Zoo. You can experience them up close at *Dinosaurs: Unextinct at the L.A. Zoo*. The exhibit includes 14 dynamic animatronic dinosaurs that bring these animals back to life. Tickets cost \$5 (children under two are admitted free) and are available at the Zoo and online at www.lazoo.org/dinos. But dinosaurs are just the beginning of your time traveling adventures at the Los Angeles Zoo.

See pg. 2 →



Make It a Date Beastly Ball

This year's Beastly Ball will honor Patricia Silver. Festivities also include the presentation of the Tom Mankiewicz Leadership Award, which recognizes entertainment industry professionals for outstanding leadership in local or global wildlife and environmental conservation, or for efforts to promote civic pride and harmony in our multicultural community. Enjoy fine refreshments, engaging entertainment, and guest



Patricia Silver with husband Stanley



Photo by Jamie Pham

appearances by some of our charismatic resident creatures. Individual tickets cost \$1,000 each, and table reservations start at \$7,500. For details, contact Special Events Manager Maricela Vazquez at 323/644-4753. **June 11 (Saturday) 6 p.m.**

Special Notice

In order to prepare for this year's Beastly Ball, the Los Angeles Zoo will close early on Saturday, June 11. Ticket sales will end at 3 p.m. Gates will close at 4 p.m. We apologize for any inconvenience and hope to see you at the Ball!



Roaring Nights

These wild summer evenings feature live music from local up-and-coming bands, a DJ-fueled dance party, live animal encounters, pop-up keeper talks, and full bar service, plus food trucks and Animal Artistry Paint Party.

Ticket price for GLAZA members is \$22. Price for nonmembers is \$25. This year tickets include admission in to *Dinosaurs: Unextinct at the L.A. Zoo*. You must be at least 18 years of age to attend this event. For details, visit www.lazoo.org/roaringnights. **June 24 (Friday), July 22 (Friday), and August 26 (Friday)**

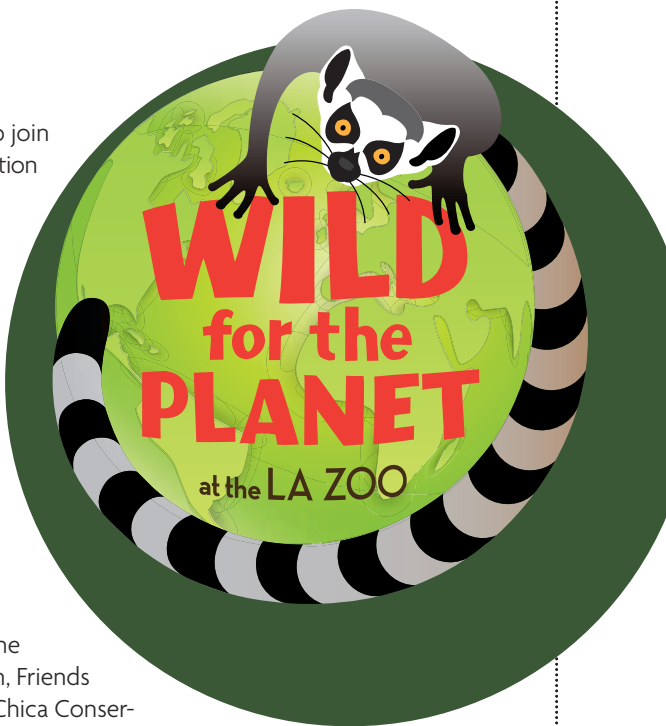


Wild for the Planet

Don't miss your chance to join the Zoo's new annual celebration of our precious planet and its inhabitants. Starting the weekend after Earth Day and continuing through the weekend after Endangered Species Day (May 20), the focus of this month-long event is the many facets of conservation. Special animal enrichment and keeper presentations spotlight the Zoo's efforts to protect endangered and threatened species. Exhibitors such as the Theodore Payne Foundation, Friends of the L.A. River, and Bolsa Chica Conservancy will share what you can do to safeguard natural resources and promote biodiversity.

Enjoy special interactive performances by Swazzle's Puppet Show inspired by the Zoo's work with California condors and an Upcycling Inspiration Lab for ideas on creative crafting without waste. During your visit, learn what actions Zoo staff and volunteers take to minimize their environmental footprints and get inspired to take an eco-pledge of your own. Share your pledge on social media using #WildForThePlanet and you'll be entered into a sweepstakes for a free compost bin or family four-pack of tickets to see *Dinosaurs: Unextinct at the L.A. Zoo*. For event information, exhibitor schedule, and official sweepstakes rules, go to www.LAZoo.org/WildForThePlanet.

Saturdays and Sundays through May 22 10 a.m.–4 p.m.





zoo update

by Connie Morgan,
GLAZA President



My experiences with dinosaurs beyond Dino, the genial brontosaurus of the Sinclair gas station globes, came through observing my children and their friends as youngsters. While my own son was fascinated with trains (the labeling and ordering of various Thomas the Tank Engine cars), many of his nursery compatriots knew everything there was to know

about dinosaurs. Why not? They are fascinating—big, varied, and fantastical looking. In playing with plastic replicas, learning first how to sequence them from big to small, from one body shape to another, and then moving on to imaginative play, facts and figures were discovered, and endless questions ensued. “What did they sound like?” “Why aren’t they here anymore?”

And with that, important science conversations were taking place.

My second experience with dinosaurs came in listening to one of my geologist husband’s lectures about their demise. For 250 years, paleontologists theorized that their extinction—and every major extinction episode—occurred gradually, over a very long period of Earth’s history. But in 1984, a father



Photo by Tad Motoyama



Photo by Tad Motoyama

1. Ratites such as the cassowary (above) might seem primitive, but pheasants (below) have been around longer.
2. Tomistomas represent an ancient group of reptiles.
3. Spiders were among the earliest land animals.

4. Short-nosed echidnas are one of the few surviving monotremes.
5. Black phoebes belong to a family of birds called Tyrannidae or tyrant flycatchers.



Photo by Charlie Morey



Photo by Jamie Pham



Photo by Jamie Pham

animal activities at your Zoo

January 1–
February 29

Births in the first two months of the New Year included a **black duiker**, a **Malay chevrotain**, two **Chacoan peccaries**, three **gray short-tailed opossums**, and one **yellow-footed rock wallaby**. Hatchings included two **Mexican beaded lizards** (two more hatched in March), 10 **South**

American bushmasters, and 10 batches of **sunburst diving beetles**.

A new breeding pair of **bighorn sheep** arrived, as well as two female **mountain bongos**, two **Grevy’s zebras**, four **Ethiopian mountain adders** (relatives of the **Gaboon viper**), 23 **Madagascar hissing cockroaches**, and a **Congo peacock**.

Among the departing animals were offspring of many successful LAIR breeding efforts: a **Baja rat snake**, two **Catalina Island rattle-less rattlesnakes**, two **desert spiny lizards**, a **butaan (Gray’s monitor)**, two **South American bushmasters**, a **San Bernardino mountain king snake**, two **golden-tailed geckos**,

a **Southwestern speckled rattlesnake**, a group of 20 **sunburst diving beetles**, and six **splash-back poison frogs**. The visiting **reindeer** returned to their home in Oregon, and a young male **Bornean orangutan**, who completed quarantine at the Zoo after arriving from New Zealand, continued on to Busch Gardens in Florida. Other outward-bound creatures included three **brush-tailed bettongs**, three **peninsular pronghorn**, four **red-rumped agoutis**, and a **crested screamer**.

gray short-tailed opossums

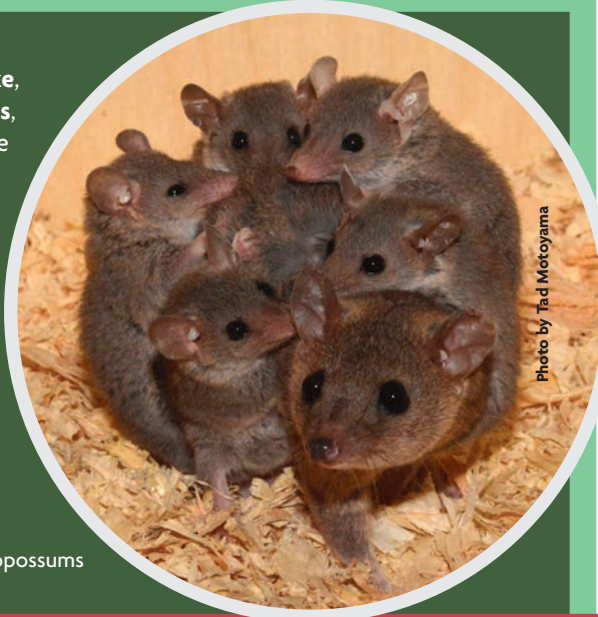


Photo by Tad Motoyama





and son physicist and geologist team hypothesized and then backed up a theory that the dinosaurs instead were made extinct in a single catastrophic event when an asteroid slammed into the waters of the Yucatán Peninsula near Chicxulub. The impact created a hundred-mile-wide crater followed by an initial heat pulse after which the earth plunged into an “impact winter.”

For these magnificent creatures, which had roamed earth for 100 million years, that one event reordered evolution forever.

It took a while for scientists to accept this scenario. I bring this up because of the slow progress we seem to be making in avoiding an extinction event of our own design. Elizabeth Kolbert points out in her book, *The Sixth Extinction*, that in

“transforming our ecological landscape,” through removing rainforests and altering our atmosphere, we are deciding “which evolutionary pathways will remain open and which will be forever be closed.” Something will survive, but life may be very different from the way we know it today.

At the Zoo, we are working to conserve species. Thanks to skillful

artists and clever engineers, we’re able to magically bring back dinosaurs, but in nature, extinction is final. With the dinosaur exhibit, we hope to spur a conversation with you and your family about dinosaurs and, hopefully, these larger issues. Have fun, and be thoughtful!



Living Fossils

Charles Darwin coined the term “living fossil” in *The Origin of Species* to describe organisms that are little changed from their ancestors. The traits they possess have enabled them to survive changing conditions, or they exist in pockets of habitat that have remained largely unchanged. Among the living fossils that you can discover at the Zoo are ancient plants that have existed since dinosaurs roamed the earth—and longer.

Though cycads superficially resemble both palms and ferns, they are actually more closely related to conifers such as pines. These plants are tougher and spinier than any fern and all but the most barbed palms—defenses that helped them avoid being eaten by giant herbivorous dinosaurs such as Stegosaurus and Triceratops. The Zoo’s cycad garden (in front of Zoo Grill) includes species from Africa and the Americas. Extremely slow growing and slow to reproduce, many today are endangered in the wild due to habitat loss, though some species have become popular landscaping plants thanks to domestic propagation.

Across from the cycad garden, next to the administration buildings, is a maidenhair tree (*Ginkgo biloba*). (You can find a ginkgo grove at the Papiano Play Park.) Previously known in the West only by fossil records dating back 270 million years, these beautiful trees were widely believed to have vanished along with the dinosaurs, but in 1691, a concealed grove was discovered growing in Japan by the German physician and naturalist Engelbert Kaempfer. He later brought seeds to Europe where they were easily propagated and have since become popular ornamental trees.

The dawn redwood (*Metasequoia glyptostroboides*) was also believed to be long extinct when a relict grove was discovered in a remote valley in China. These living trees were almost identical to fossil remains carbon dated at 90 million years in age. A 10,000-mile trek led by paleobotanist Dr. Ralph Chaney of the University of California, Berkeley in 1948 brought seed back to the U.S. All the dawn redwoods alive today (including those at the Zoo) originate with that expedition. Superficially, dawn redwood trees resemble California coast redwoods, though they are deciduous and drop their needles seasonally. They are endangered in the wild.

Ferns are so common (there are more than 11,000 species worldwide) that it’s easy to overlook their remarkable history, which stretches back about 400 million years. Ferns predated flowering plants and were the dominant botanical life form during the Carboniferous era 360 to 286 million years ago when flying insects and reptiles first appeared. Large tree ferns (native to Australia) are found throughout the Zoo as are our native California sword ferns.



Cycads survived the dinosaurs but many are now endangered.



A living dawn redwood branch with a fossil ancestor.



Modern ginkgo leaves are almost identical to fossil remains from the Paleocene era.



Photos by Bob Wickham, Tad Motoyama, Michael Swartz, Jamie Pham, and Sandy Masuo



Did you know that you can name a resident L.A. Zoo animal? Many naming opportunities are available through GLAZA’s Name-an-Animal Program, with donations ranging from \$1,000 to \$50,000. Each naming is commemorated with a plaque and ceremony at the animal’s habitat in addition to a VIP tour with a visit from your animal’s care staff, among other benefits. This program supports the Zoo’s animal acquisition fund, which promotes vital wildlife preservation and breeding projects here and around the world.

Naming an animal expresses your commitment to our conservation programs, creates a deeper connection with an animal resident, and enhances your Zoo experience. Whether you’re celebrating a birth, graduation, or other milestone, or are looking for a thoughtful memorial, this program offers meaningful recognition. For more information, please contact Patricia Noland at 323/644-6035 or e-mail pnoland@lazoo.org. Donations to GLAZA are tax-deductible to the fullest extent allowed by law.



Photo by Jamie Pham

Giant anteater Leonard was named for Leonard Nimoy.



Since it began in 1990, Bowling For Rhinos has generated more than \$6 million to control poaching and protect ecosystems that support rhinos and the species that share their habitat—and the Los Angeles Zoo has led the way for the past seven years. This year, the L.A. chapter of the American Association of Zoo Keepers (AAZK) hopes to raise even more funds with a night of bowling at Jewel City Bowl in Glendale. Festivities will include a silent auction, opportunity drawings, food, costumes—and, of course, bowling! Learn how to help by contacting Bowling For Rhinos Co-Chairs Damian Lechner and Nicki Piepers at AAZKLosAngeles@gmail.com or leave a message with your name and phone number at 323/644-6004.

**May 7 (Saturday)
6 p.m.–12 a.m.**

CONSERVATION CORNER



Every year, cell phones create some 65,000 tons of electronic waste that contains toxic materials including lead, nickel, and beryllium. When phones are discarded with other trash (illegal in California), these toxins leach into the environment, polluting the soil and water. Coltan, one of the components used in manufacturing cell phones (and other electronic gadgets) is mined from the forests of the Democratic Republic of Congo, which is prime habitat for gorillas and many other endangered species. The mining process destroys the forest, leaving the animals homeless and vulnerable to poachers.

As part of our Wild for the Planet celebration, the Zoo is raising awareness about the importance of recycling electronics and doing so in an environmentally responsible manner. Zoos across the country, including this one, encourage electronics recycling through a company called ECO-CELL, which refurbishes phones where possible, then resells them or donates them to conservation NGOs. Any devices or parts that cannot be refurbished are recycled, keeping toxins out of the environment and reducing the demand for minerals such as coltan. Another ECO-CELL benefit is that a portion of the proceeds from zoo-based electronics recycling programs goes to conservation nonprofits such as Gorilla Rehabilitation and Conservation Education (GRACE).

Before heading to the Zoo, take an inventory of your handheld electronics, including cell phones, MP3 players, handheld games, e-readers, and portable hard drives. Bring in any unwanted items for donation and drop them in the ECO-CELL bin near the front entrance. You’ll shrink your impact on the planet and help save endangered species! —Bonnie Heather Holland



ECO-CELL provides free phones to conservation groups.

As a covered entity under Title II of the Americans with Disabilities Act, the City of Los Angeles and the Los Angeles Zoo do not discriminate on the basis of disability and, upon reasonable advance notice, will provide reasonable accommodation to ensure equal access to its programs, services, and activities. Sign language interpreters, assistive listening devices, or other auxiliary aids and/or services may be provided upon request. To ensure availability, you are advised to make your request with reasonable advance notice prior to the event or activity you wish to attend. For further information, please contact: 323/644-4200 (voice/TTY).



Volume XXXIX
Number 6

Greater Los Angeles Zoo Association Annual Memberships: Individual \$55, Individual Plus \$75, Family \$126, Family Deluxe \$165, Contributing Associate \$250, Wildlife Associate \$500, Conservation Associate \$1,000. Each membership category includes unlimited admission to the Los Angeles Zoo for one year, one-year subscriptions to *Zoo View* and *Zooscape*, 10-percent discount at Zoo restaurants and shops, and invitations to special events. Students and seniors receive \$10 off an annual membership.

The Los Angeles Zoo and Botanical Gardens is located in Griffith Park at the junction of the Ventura (134) and the Golden State (I-5) freeways. We are open from 10 a.m. to 5 p.m. daily, except December 25. For information, phone 323/644-4200, or visit us on the Internet at www.lazoo.org.

Sandy Masuo, Editor
Pickle Group, Graphic Design
Tad Motoyama, Zoo Photographer
Jamie Pham, GLAZA Photo Editor
Copyright © 2016 GLAZA. All rights reserved.
Printed on 30-percent recycled stock

Nurturing wildlife and enriching the human experience



calendar of events

MEMBERS ONLY

Member Tours

Docent-led tours are available to GLAZA members only and are free for everyone eligible on your membership. No confirmations will be mailed. Please make reservations at least two weeks in advance by phoning 323/644-4244.

May 21 (Saturday)

May 22 (Sunday)

May 28 (Saturday)

May 29 (Sunday)

June 5 (Sunday)

June 18 (Saturday)

June 25 (Saturday)

June 26 (Sunday)

July 9 (Saturday)

July 10 (Sunday)

July 23 (Saturday)

July 24 (Sunday)

(Meet at the waterfall near the entrance to the International Marketplace at 10:30 a.m.)

SPECIAL TOURS

These tours are free to GLAZA members, but space is limited. To register, e-mail docents@lazoo.org and be sure to include "Bird Walk," "Garden Tour," or "Bat Walk" in the subject line. You will receive a link to complete your registration through Eventbrite.com. You may also phone 323/644-4703.

Summer Glory Garden Tour

The Zoo is at its floral peak in late spring with colorful flowers, foliage, and even some ripening fruits. Enjoy a garden tour to celebrate the onset of summer.

June 4 (Saturday), 8–10 a.m.

Happy Bird-day!

International Migratory Bird Day (IMBD) spotlights bird migration, one of the most significant and spectacular events in the Americas. Since it began in 1993, more than 600 sites from Canada to Argentina observe IMBD. You can celebrate with a bird walk at the Zoo, which is home to a dazzling array of local birds and migratory guests. Learn more about IMBD at www.birdday.org.

May 14 (Saturday), 8–10 a.m.

Night Flight

Griffith Park is an important oasis for local and migratory wildlife, including bats. Strolling Zoo grounds at dusk is a perfect opportunity to see resident bats take to the air. Children attending this event must be at least four years of age. Due to limited spaces and high demand, a maximum of four people may register per membership.

July 30 (Saturday), 6–8 p.m.

Members Appreciation Morning

GLAZA offers three opportunities a year for members at all levels to explore the Zoo before it opens to the public. Reservations are not necessary. Simply bring your membership card and photo ID for entry.

**May 1 (Sunday)
8:30–10 a.m.**

SAFARI SOCIETY ONLY

Safari Society offers donors a range of exclusive events and unique opportunities to explore the Zoo. To join Safari Society, phone the Safari Society Access Line at 323/644-4717, e-mail nsimerly@lazoo.org, or visit www.lazoo.org/support/safarisociety. Conscientious corporate leaders support the Zoo through Business Partners. For details about this program, contact Jan Frazier at 323/644-4722.

SPECIAL MEETING SCHEDULED

Members are invited to attend a special meeting of the Greater Los Angeles Zoo Association in Witherbee Auditorium on June 9, at 11:30 a.m. The main item of business is to approve the amendment and restatement of GLAZA's Articles of Incorporation and Bylaws. These amendments will modernize both documents. Currently, all members vote on corporate governance matters, such as the annual election of trustees. Under the proposed amendments, the board will vote on these governance matters. Members will continue to have the other benefits of membership. To review the changes and for more information, please visit www.lazoo.org/specialmeeting.

Proxy

Know all persons by these present: That, I, the undersigned, have made, constituted, and

Zoo Director's Series

Meet the Los Angeles Zoo's Chief Veterinarian Dr. Lisa Naples and learn about the amazing world of animal health care at the Zoo, where patients come in all shapes, sizes, and temperaments. This special presentation includes wine and hors d'oeuvres, plus conversation with the speaker, curators, and our own zoo director. Safari Society donors, watch the mail for your invitation.

May 22 (Sunday)

appointed Phyllis Kupferstein of Los Angeles, California, my proxy to represent me at the Annual Meeting of the Greater Los Angeles Zoo Association to be held on Thursday, June 9 at 11:30 a.m., and at any or all adjournments thereof, hereby granting unto said Phyllis Kupferstein all the powers that I would possess if personally present at said meeting or at any adjournments thereof. Should I be present, this proxy shall be void.

Mail to: Phyllis Kupferstein, Secretary, c/o GLAZA, 5333 Zoo Drive, Los Angeles, CA 90027-1498

**June 9 (Thursday), 11:30 a.m.
Witherbee Auditorium**

Name	
Address	
City/State/Zip	
Signature	Date

MAY–JUNE 2016

ZOOscape

Member Newsletter of the Los Angeles Zoo and Botanical Gardens

Zooscape (ISSN 1060-3859) is published bimonthly by the Greater Los Angeles Zoo Association, 5333 Zoo Drive, Los Angeles, CA 90027. 323/644-4200 www.lazoo.org
Periodical Postage paid at Los Angeles, CA.
POSTMASTER: Send address changes to Zooscape, 5333 Zoo Drive, Los Angeles, CA 90027-1498

Inside this issue



1

Cretaceous Creatures



2

Animal Activities



3

Green Scene



May 6, 2016

ED-ZOO-CATIONAL Adventures

FOR MORE DETAILS, GO TO WWW.LAZOO.ORG/EDUCATION/CHILDRENSCLASSES/. TO REGISTER, GO TO WWW.LAZOO.ORG AND CLICK ON "BUY TICKETS."

Registration Policy: Registration for Ed-zoo-cational Adventures begins two months prior to the program date. Please check www.lazoo.org for class availability. For more information, phone 323/644-4211.

TODDLER TOTES

Age 24–35 months

Members: \$18 per child/adult pair
Nonmembers: \$20 per child/adult pair
Class Times: 9:15 a.m. (Wednesdays), 9:15 (Fridays and Saturdays), and 11 a.m. (Fridays and Saturdays)

E-ticket required for class admission.

Toddler Totes classes are educational adventures for your child and you. Learn about adaptations as you investigate the Zoo's animal collection and discover the ways animals use different parts of their bodies. Each 75-minute class includes a variety of fun, age-appropriate, hands-on activities such as storytelling, live animal encounters, and explorations on Zoo grounds.

Terrific Tails

May 4 (Wednesday), 6 (Friday), and 7 (Saturday)

CRITTERS 'N' KIDS

Age 3–4 years

Members: \$24 per child/adult pair
Nonmembers: \$27 per child/adult pair
Class Time: 9:30 a.m. (Wednesdays/Fridays/Saturdays)

E-ticket required for class admission.

Critter 'n' Kids classes take your child and you on an exploration of the Zoo's animal collections, from cool cats and exciting elephants to slithering snakes and fabulous flamingos. Each 90-minute class includes a variety of fun, age-appropriate, hands-on activities such as storytelling, art, games, and adventures on Zoo grounds.

Exciting Elephants

May 11 (Wednesday), 13 (Friday), and 14 (Saturday)



ZOO EXPLORERS

Age 5–6 years

Members: \$30 per child
Nonmembers: \$35 per child
Class Time: 9 a.m. (Sundays)

E-ticket required for class admission.

Grab your backpack and explore the Zoo to learn about biomes around the world, from deserts to mountains, grasslands to rainforests. Trek over the rivers and through the woods to seek out fascinating animals that call these unique habitats home. This drop-off class is designed for children independent of their parents. All children must bring water and a snack for this three-hour class.

Tropical Treasures

May 1 (Sunday)



FAMILY CLASSES

All Ages

Members: \$10 per person/children under 2 are free
Nonmembers: \$20 per adult/\$15 per child (ages 2–12)/children under 2 are free

Class Time: 9:30 a.m. (Sundays)

E-ticket required for class admission.

Bring your family to the Zoo and join us for a special adventure. These 90-minute classes offer a unique opportunity for families to come together and share in an adventure while learning about animals.

Home Sweet Home

June 12 (Sunday)

the Zoo. They will meet animals, hear firsthand how animal keepers provide care, and enjoy refreshments. AEG has made a generous contribution as the presenting sponsor of Dreamnight. Additional sponsorship support is

SLEEPOVERS

Creature Camp-Out

This overnight adventure begins with a guided tour that leads to base camp where your tent awaits. The evening is filled with fun family activities including a sweet treat and beastly bedtime stories. Wake to the lion's roar and hooting chimps, enjoy a continental breakfast, and have a special animal encounter. Then take your memories home with a souvenir T-shirt. Registration for GLAZA members costs \$65 per person; nonmembers pay \$85 per person. Camp-Out begins at 6:30 p.m. and ends at 10 a.m. the next day. Please note: this program does not include dinner. For details visit www.lazoo.org or phone 323/644-4211. Registration forms will be posted at 10 a.m. two months prior to the overnight date.

SUMMER ZOO CAMP

Children will have the time of their lives discovering the Zoo's amazing animals and engaging in fun, safe activities. Each camp is led by experienced, specially trained adult staff. Registration is now open. Visit www.lazoo.org for details.

June 20 (Monday) through August 12 (Friday), 9 a.m.–3 p.m.

Morning and afternoon extended care will be available for an additional fee.

Dreamnight Presented by AEG

On May 6, approximately 1,000 patients and families from Children's Hospital Los Angeles (CHLA) will enjoy a respite from their health care worries during this special evening at

provided by The Honest Company, The Wayne Gretzky Foundation, and EPSON. Everyone can support the work of both GLAZA and CHLA by making a donation at www.lazoo.org/dreamnight.

Cancellation Policy: The Zoo must receive at least two weeks (14 days) advance notice by phone (323/644-4211) or fax (323/644-4299) in order to issue a full refund. No refunds will be issued after this period. No refunds or transfers will be honored for no-shows. Prices and program dates are subject to change without notice. For more details about cancellation, transfer, refund, and booking policies, visit www.lazoo.org.